

THE 411

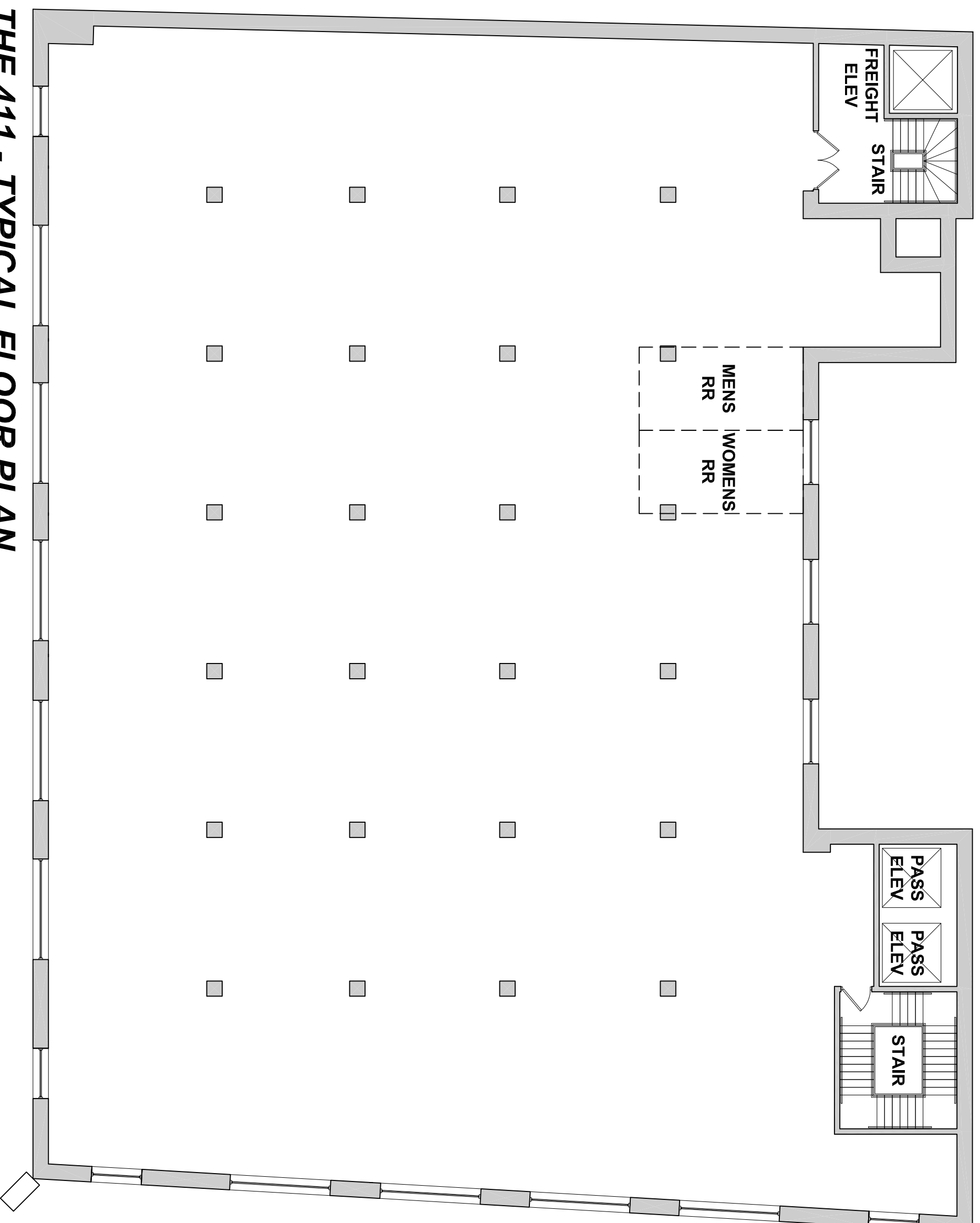
TYPICAL FLOOR INFO

GROSS 12,170 SQFT

(GROSS SQFT IS MEASURED FROM EXTERIOR FACES OF BUILDING)

RENTABLE 10,897 SQFT

(RENTABLE SQFT IS MEASURED FROM DOMINANT INTERIOR FACES OF BUILDING EXCLUDING ELEVATORS AND STAIRS)



THE 411 - TYPICAL FLOOR PLAN

